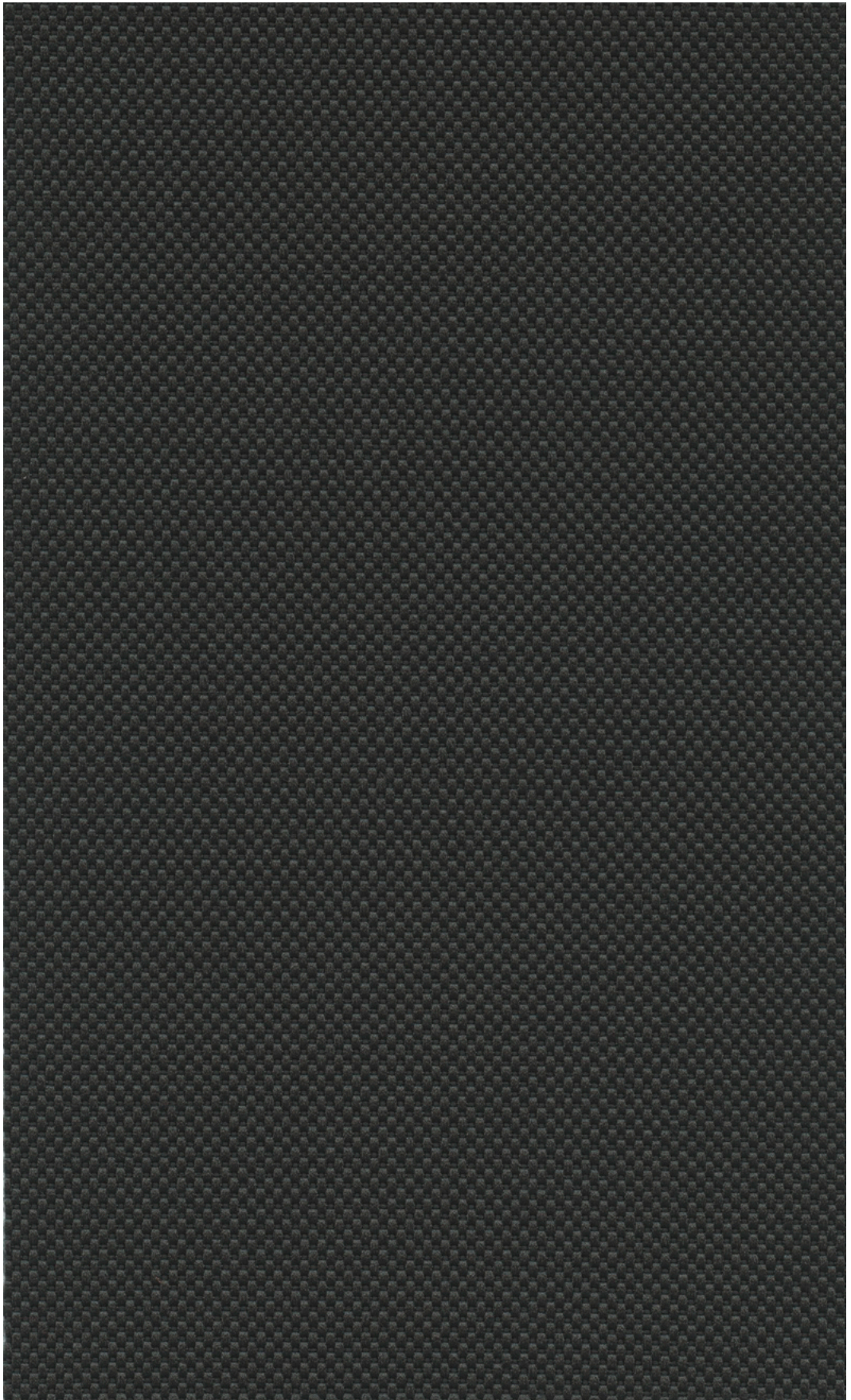
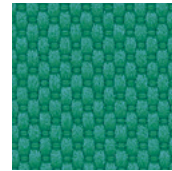


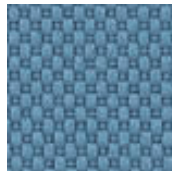
47 Nova. **Wilkhahn**



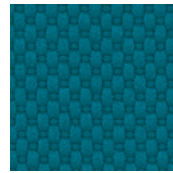
47 Nova.



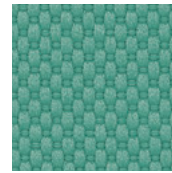
47/90



47/77



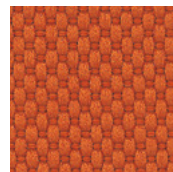
47/82



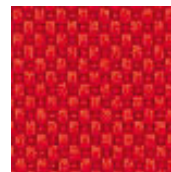
47/80



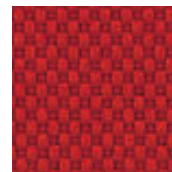
47/73



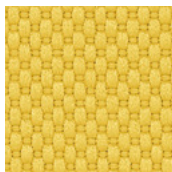
47/64



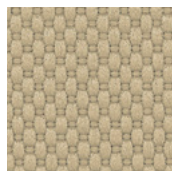
47/60



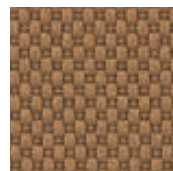
47/66



47/50



47/31



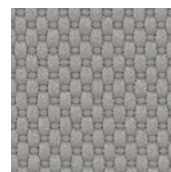
47/42



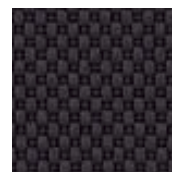
47/92



47/21



47/20



47/10

Beschreibung

100% Polyester
560 g/dfd. m
Breite 140 cm

Prüfungsergebnisse

Scheuerfestigkeit:
50.000 Scheuerhübe,
BS EN ISO12947-2 (Martindale)
Lichtechtheit:
5-7, BS EN ISO
105-B02 Methode 2
Pilling:
5, BS EN ISO 12945-2
Reibecktheit:
Trocken 4-5, Nass 4-5,
EN ISO 105-X12
Flammschutz:
EN 1021-1
EN 1021-2 (CMHR)
Schwerentflammbarkeit hängt
vom verwendeten Schaum ab.

Reinigung

Festverspannte Bezüge:
regelmäßig absaugen,
professionelle
Trockenreinigung
Abnehmbare Bezüge:

**Description**

100% Polyester
560 g/lin. m
width 140 cm (55")

Test results

Abrasion:
50.000 rubs,
BS EN ISO12947-2 (Martindale)
Lightfastness:
5-7, BS EN ISO
105-B02 Method 2
Pilling:
5, BS EN ISO 12945-2
Fastness to rubbing:
dry 4-5, wet 4-5,
EN ISO 105-X12
Flame resistance:
EN 1021-1
EN 1021-2 (CMHR)
Flame retardancy depends
on the foam used.

Cleaning

Fixed covers: periodical
vacuum cleaning,
professional cleaning
with dry foam
Removable covers:

**Description**

100 % Polyester
560 g/m
laize 140 cm

Résultats des tests

Résistance à l'abrasion :
50 000 révolutions selon,
BS EN ISO 12947-2 (Martindale)
Résistance à la lumière :
5-7, BS EN ISO
105-B02 méthode 2
Boulochage :
5, BS EN ISO 12945-2
Résistance au frottement :
à sec 4-5, mouillé 4-5,
EN ISO 105-X12
Tenue au feu :
EN 1021-1
EN 1021-2 (CMHR)
L'inflammabilité dépend de la
mousse mise en œuvre.

Entretien

Revêtements non
amovibles : aspirer
régulièrement, nettoyage
à sec professionnel
Revêtements amovibles :

**Descripción**

100% Poliéster
560 g/m de 140 cm
de ancho

Pruebas

Resistencia contra rozamiento:
50.000 golpes,
BS EN ISO12947-2 (Martindale)
Resistencia a la luz:
5-7, BS EN ISO
105-B02 método 2
Pilling:
5, BS EN ISO 12945-2
Solidez al rozamiento:
seco 4-5, húmedo 4-5,
EN ISO 105-X12
Protección contra llamas:
EN 1021-1
EN 1021-2 (CMHR)
La protección contra llamas
depende de la espuma utilizada.

Limpieza

Tapizados fijos: aspirar
regularmente, limpieza
profesional en seco
Tapizados
intercambiables:



50808000 - BH

Wilkhahn Germany

Wilkening + Hahne GmbH+Co. KG, Fritz-Hahne-Straße 8, 31848 Bad Münder

Wilkhahn worldwide

Australia, Belgium, China, Deutschland, España, Hong Kong, Japan, Maroc, Nederland, Österreich, Polska, Schweiz, Singapore, South Africa, United Arab Emirates, United Kingdom, United States of America

wilkhahn.com